

Royal Port Nicholson Yacht Club

2015–2016 Season

30 October 2015–13 May 2016

Race Appendix: Brothers Islands Race

1 Racing Areas

Racing shall take place in Wellington Harbour and Cook Strait.

2 Course

2.1 The course is:

Start – Barrett Reef Buoy (S) – Brothers Islands to (S) – Barrett Reef Buoy (P) – Finish.

2.2 Yachts shall not sail:

- (a) between the Point Jerningham Light and the nearest point of land;
- (b) between the Steeple Rock Light and Steeple Rock;
- (c) through Chaffers Passage; or
- (d) between Thoms Rock and the nearest point of land.

3 Marks

3.1 All marks are navigational beacons or geographic features.

4 Areas that are Obstructions

The following shall be obstructions:

- (a) a line between Point Jerningham Light and the nearest point of land;
- (b) a line between the Steeple Rock Light and Steeple Rock;
- (c) Chaffers Passage; and
- (d) a line between Thoms Rock and the nearest point of land.

5 The Start

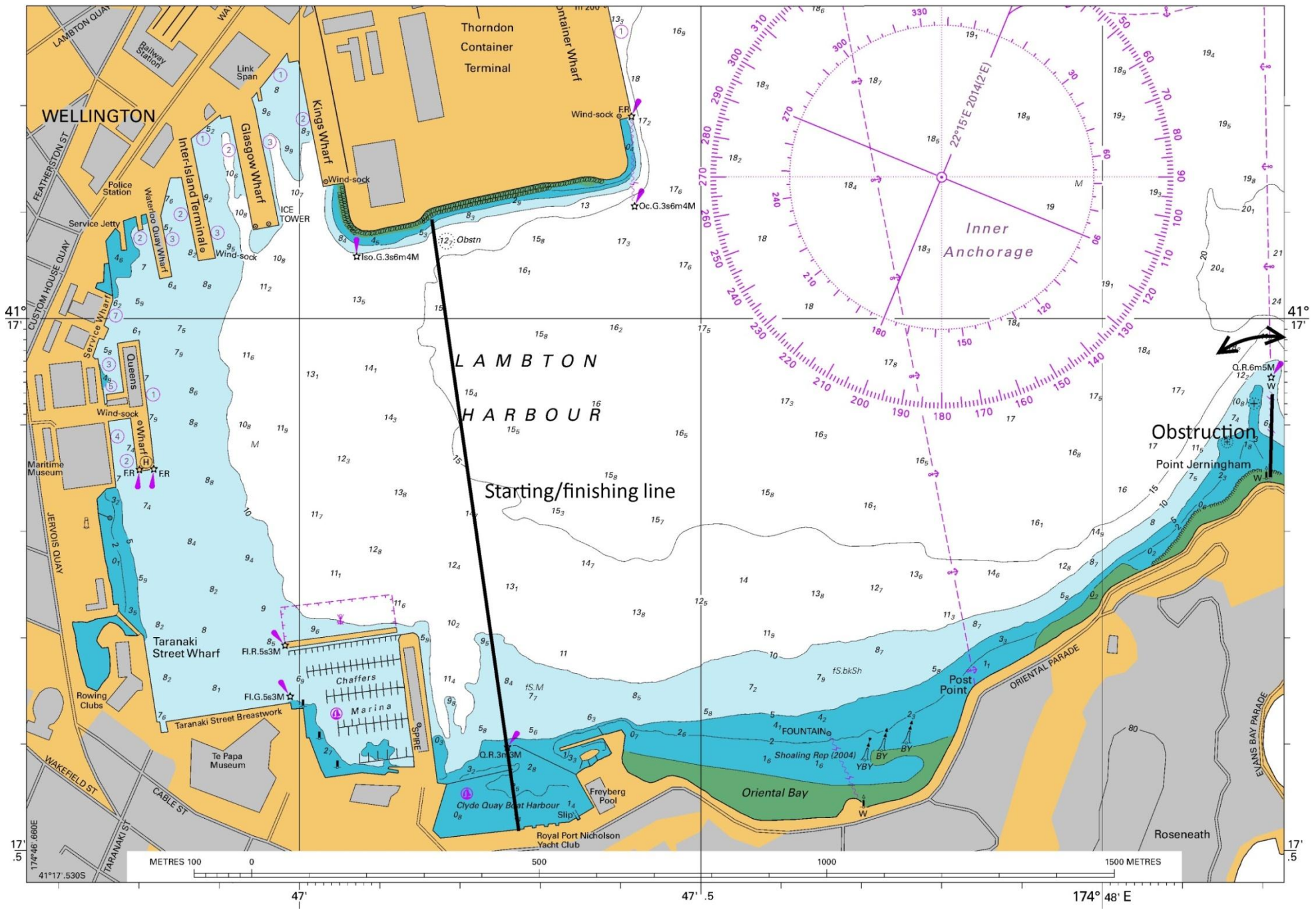
- 5.1 The starting line is an extension of the line between the start box flagpole and the light at the outer end of the Clyde Quay Boat Harbour entrance, bearing approximately 155° – 335°M.
- 5.2 If any part of a yacht's hull, crew or equipment is on the course side of the starting line at the start signal, the Race Committee may attempt to broadcast her name and/or sail number on VHF channel 62. Failure to make a broadcast will not be grounds for a request for redress. This changes rule 62.1(a).

6 The Finish

- 6.1 The finishing line is an extension of the line between the start box flagpole and the light at the outer end of the Clyde Quay Boat Harbour entrance, bearing approximately 155° – 335°M.
- 6.2 Boats must record their own finishing time using GPS as the time source. If the Race Committee records a finishing time for the boat, then the Race Committee's time will be used.

7 Radio Schedules

- 7.1 No schedules are required.
- 7.2 Any boat that has not finished by 2000hrs on 31 October 2015 must immediately lodge a trip report with Maritime Radio on VHF **Channel 16**.



WELLINGTON

LAMBTON
HARBOUR

Starting/finishing line

Inner
Anchorage

Obstruction
Point Jerningham

Oriental Bay

Roseneath

METRES 100 0

500

1000

1500 METRES

41° 17'

41° 17'

174° 46' 660E

174° 48' E

41° 17' 530S

47°

47° 5'

174° 48' E